

**ALASKA DIVISION OF HOMELAND
SECURITY & EMERGENCY MANAGEMENT**
SITUATION REPORT
25-097 April 7, 2025



Toll-Free 1.800.478.2337

Anchorage Area 907.428.7000

SEOC 907.428.7100

<u>SEOC Preparedness Level</u> Level 1	http://ready.alaska.gov	
<u>Maritime Security (MARSEC)</u> Level:1- Minimum Appropriate Security Measures		<u>Alaska Military Installation Force Protection Level:</u> FPCON Bravo

(Significant changes from previous situation reports are red.)

Significant Issues:

None

Department of Health (DOH):

For resources and current information, see: <https://health.alaska.gov/en/>

NTAS Bulletin:

The U.S. Department of Homeland Security issued an updated National Terrorism Advisory Bulletin on May 24, 2023. The current and expired bulletins can be viewed at the below link.

<https://www.dhs.gov/national-terrorism-advisory-system>

Travel Alerts and Conditions:

Ketchikan Tongass Hwy at Wolfe Point: Expect delays due to rock scaling operations and blasting efforts. Two lane traffic will be open from 6:00 PM to 8:30 AM until further notice.

For current driving conditions, dial 511 or visit: <https://511.alaska.gov/>

Barry Arm Landslide / Tsunami Risk:

Currently shows no signs of large-scale active deformation but smaller-scale instabilities on the surface of the landslide still pose a threat of localized tsunami generation in Barry Arm. Mariners transiting near Barry Arm should remain vigilant.

For the latest information on the Barry Arm Landslide and Tsunami risk, click here:

<https://dggs.alaska.gov/hazards/barry-arm-landslide.html>

Earthquakes:

United States Geological Service (USGS) Earthquake Information:

<https://www.usgs.gov/programs/earthquake-hazards>

National Tsunami Warning Center: <https://tsunami.gov/>

Alaska Volcanoes:

Great Sitkin Alert Level: **Watch** and Aviation Color Code: **Orange**

Mt. Spurr Alert Level: **Advisory** and Aviation Color Code: **Yellow**

For Alaska Volcano updates, go to: <https://www.avo.alaska.edu/>

Air Quality Index (AQI) Advisories:

No active advisories/episodes are currently in effect.

For the most up-to-date Air Quality Index Advisories:

<https://dec.alaska.gov/Applications/Air/airtoolsweb/Advisories>

Spills of Oil and Hazardous Substances:

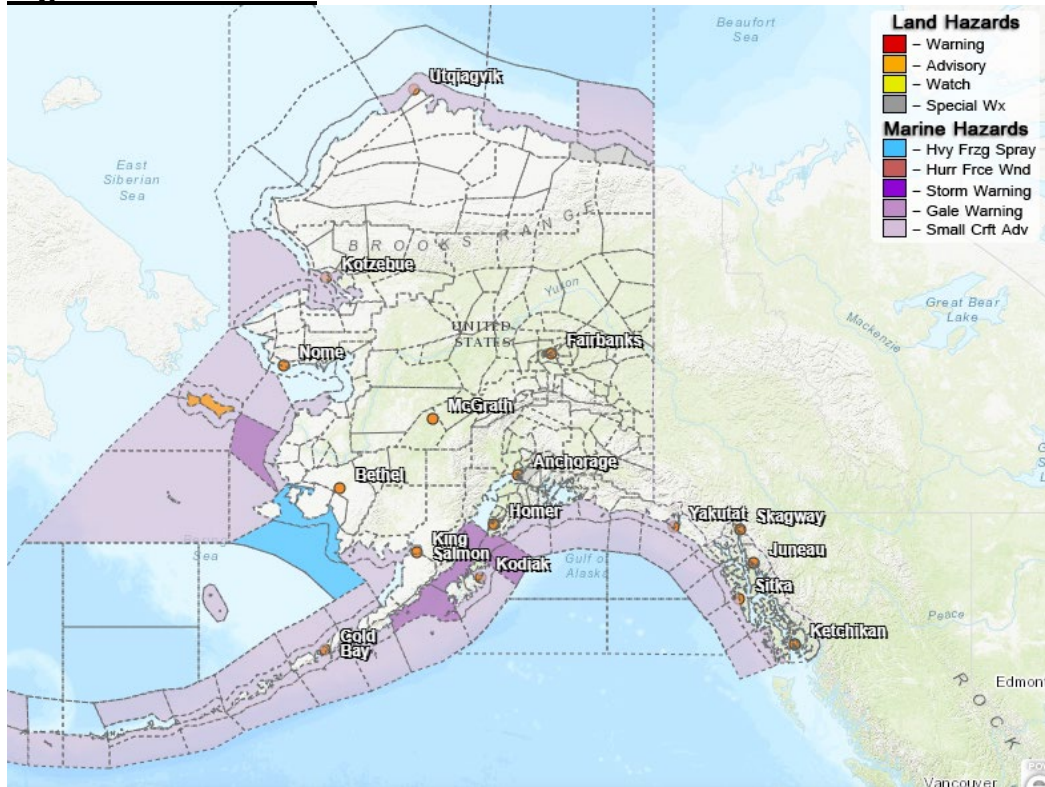
The Alaska Division of Environmental Conservation (ADEC) Spill Prevention and Response page is located at: <https://dec.alaska.gov/spar/>

Alaska Cyber Security Information:

State Employees may sign up for cybersecurity notifications and alerts at:

<https://oit.alaska.gov/security>

Significant Weather:



Winter Weather Advisory: remains in effect to 7pm today

St. Lawrence Island

Special Weather Statement: Bands of Moderate snow showers through the morning commute

Anchorage, Eagle River, Hillside

For more weather updates and information, go to <https://weather.gov/arh/>

Alaska Wildland 2024 Fire Season:

The Alaska Interagency Coordination Center is at Preparedness Level:

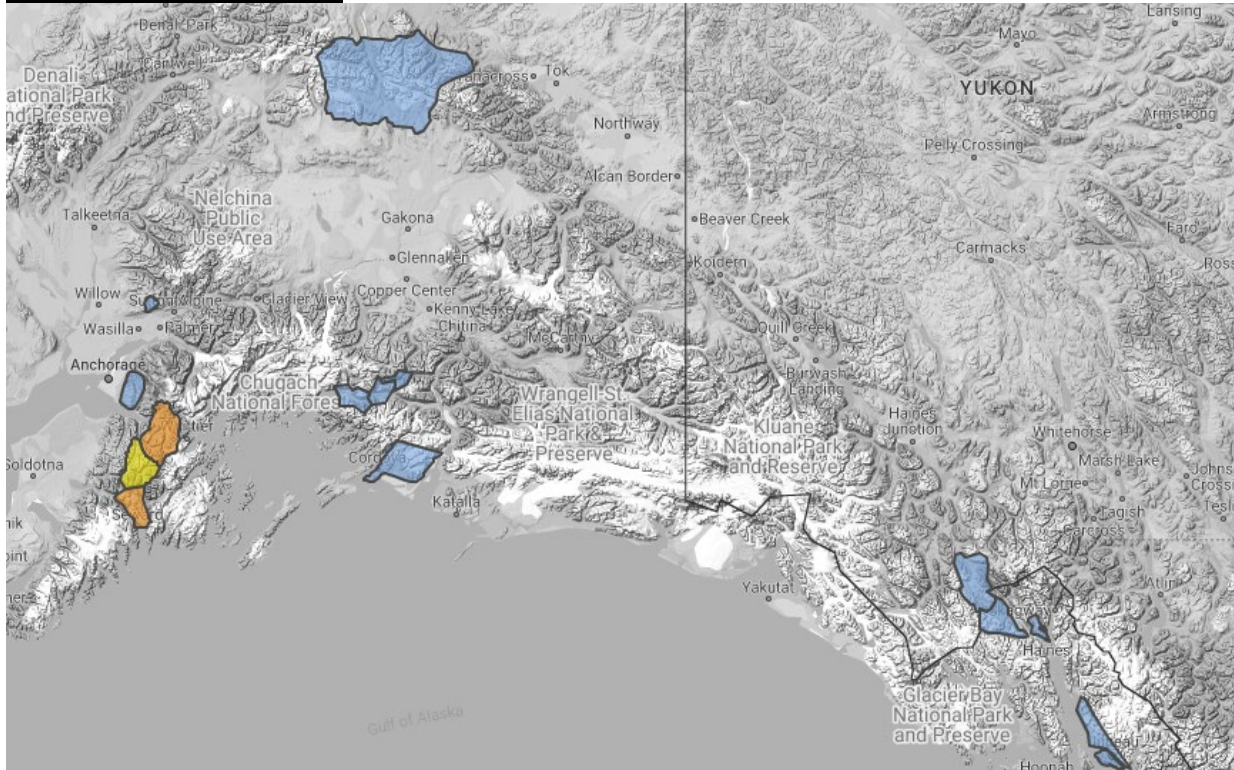
Total Fires YTD: **17**

Total Acres: 4

There are currently **4** active fire(s) with **1** new and 0 fires staffed.

For more information, go to <https://fire.ak.blm.gov/> or <https://akfireinfo.com/>

Avalanche Conditions



Turnagain Pass – **Considerable at all levels**

Summit Lake – Considerable at all levels

Seward and Lost Lake – **Considerable at all levels**

Valdez Maritime, Intermountain, Continental – Moderate at all levels

Hatcher Pass – Moderate at all levels

For more information and the most current avalanche conditions, go to: <https://alaskasnow.org/>

The Next Situation Report will be on **April 8, 2025**. A significant situation or threat level change will prompt an interim report. This report is posted on the internet at <https://ready.alaska.gov/sitrep>.

To register for email distribution, PLEASE go to:

<http://list.state.ak.us/mailman/listinfo/dhsem.situation.report>.

Direct questions regarding this report to the SEOC at 907-428-7100 or seoc@alaska.gov.